

GRADUATE STUDENT ORIENTATION

INTERDISCIPLINARY TOXICOLOGY PROGRAM UNIVERSITY OF GEORGIA

Nikolay Filipov, Ph.D., Director ITP

Tai Guo, Ph.D., Director of Graduate Studies for ITP

Wanda Darden, ITP Graduate Program Administrator

1



IMPORTANT CONTACT INFORMATION

Dr. Nick Filipov: Filipov@uga.edu

Rm. 2122 Physiology and Pharmacology Dept.,
College of Veterinary Medicine
706-542-4940

Dr. Tai Guo: tlguo1@uga.edu

Biomedical Sciences Dept., College of Veterinary Medicine
706-542-1358

Wanda Darden: wdarden@uga.edu

Rm. 2120 College of Veterinary Medicine
706-583-0058

ITP website: www.toxicology.uga.edu

Graduate School website: www.grad.uga.edu

UGATOX BOARD: 2025-2026

President – Alyssa Otto

Vice-President – Trevor Kalinowski

Treasurer – Blake Benson

Secretary – Kyliia Mack

Social Chairs – Jenna Wilson, Alicia Harriman, Simran Bhatia, Erick Mollinedo



ITP 2025- 2026

David Benson

Simran Bhatia

Samantha Brannen

Tao Chen

Jiaqi Chen

Arina Chernikova

Indrani Dhanasekaran

Fatma Eldefrawy

Samar Haj Ali

Alicia Harriman

Yuqing Ji

Danielle Jiang

Emma Jones

Trevor Kalinowski

Ignacio Llada

Kylia Mack

Taylor Martin

Kristofer Meier

Erick Mollinedo

Alyssa Otto

Ifeoluwa Oyeku

Jesse Riker

Fabian Tejedor-Rojas

Ethan Shealy

Jake Smith

Yufei Sui

Joshua Tolson

Joseph Union, III

Jenna Wilson

Toxicology

The study of harmful effects of stimuli on living systems

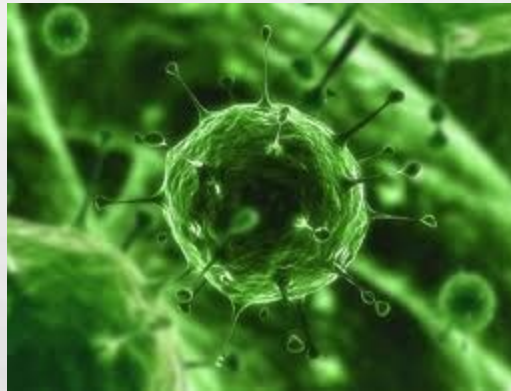
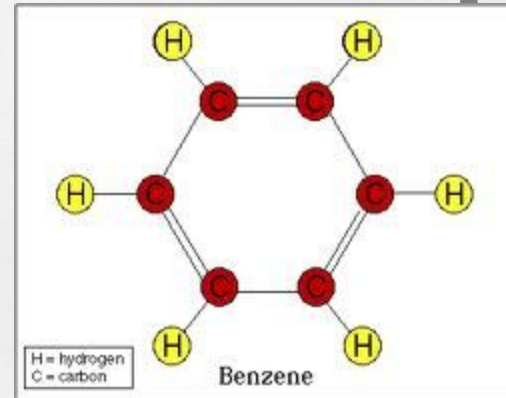
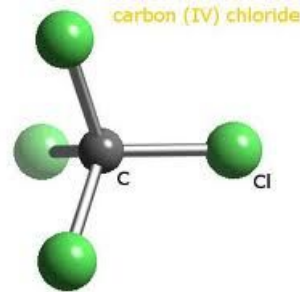
-Biological (bacteria, viruses, fungi, parasites etc)

-Chemicals (drugs, oxidants, pollutants, mutagens, etc)

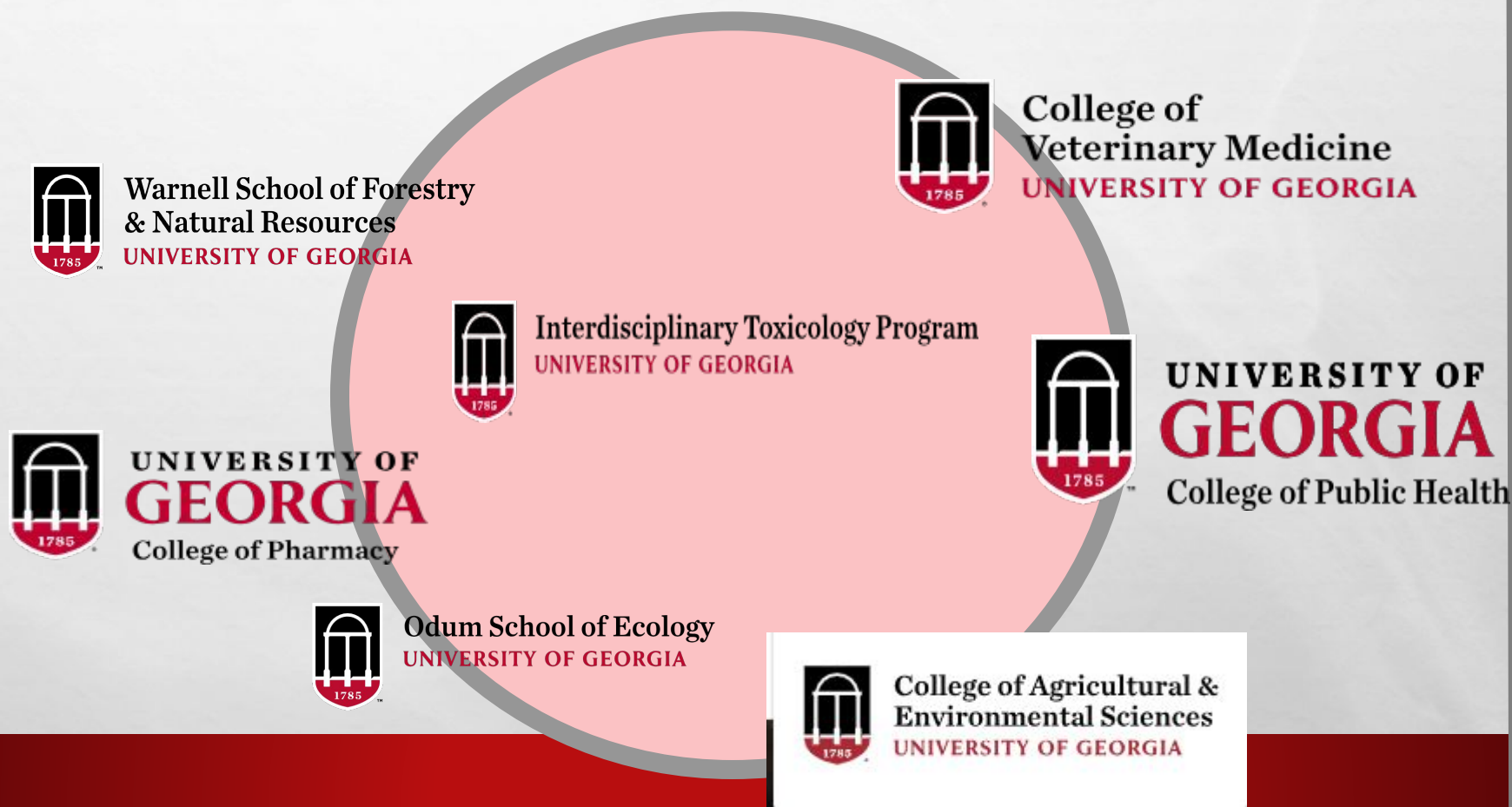
-Physical (Trauma, ergonomic injuries, light, etc)

By understanding these events we can prevent them and try to predict their exposure and impact.

Toxicology is a broad and multi-disciplinary field requiring training in several areas.



The Interdisciplinary Toxicology Program (ITP)



The Mission of ITP

- Dedicated to the advancement of biomedical and environmental knowledge through research
- Promotes collaborative interdisciplinary toxicology research and provides high quality training and mentoring to graduate students from multiple disciplines.
- Serves as a resource for toxicology-related information for the public, government agencies and the private sector.

The Values of ITP

- Excellence in ecological, computational and mechanistic toxicology.
- A dynamic, forward-looking, interdisciplinary curriculum taught by a nationally and internationally respected faculty.
- A stimulating and challenging learning environment.
- Highly skilled toxicologists serving regionally, nationally, and internationally.
- High distinction in research, scholarship, and creative endeavors.
- Open communication and free exchange of information among scientists, governmental and non-governmental agencies, and the public.



ITP Program for Students

- Offering both MS and PhD degrees
- ITP Faculty from across campus.
- Students belong to both their home department and ITP. Home Department is the department of your major professor.
- ITP students are NOT required to meet the home department's program of study in addition to ITP requirements.*
- Faculty mentors and advisory committees may make additional requirements beyond those of the ITP program (such as attendance at home department seminars), but the base course of study is the ITP program, not the home department's program. BE SURE TO KNOW OF ANY REQUIREMENTS FROM YOUR "HOME" DEPARTMENT BEFORE END OF YEAR ONE.



ITP Program for Students

- Your degree-granting program is the ITP.
- All official paperwork that goes to the Graduate School is processed through the ITP office and usually requires the signature of the ITP Director of Graduate Studies.
- Your home department also has a Director of Graduate Studies. This individual can be a valuable resource for you regarding general graduate program questions; however, it is important that you do not ask them to sign or submit any of your official paperwork.
- Submit all of your paperwork to the ITP Graduate Program Office
- It is the responsibility of each student to follow the deadlines set by the Graduate School for submitting various forms (see checklists in Appendices I, II) and the application for graduation. Please contact the ITP Graduate Program Office for such deadlines for May or December graduation commencements. Alternatively, you may check the Graduate School website for these deadlines. <http://www.grad.uga.edu/>

Upon successful completion of the MS or PhD program in Toxicology, all students should be able to:

- Demonstrate working knowledge and comprehension of toxicological principles, including, but not limited to, dose-response, mechanisms of action, toxicokinetics, target organ toxicity, environmental fate and transport of chemicals, and chemical induced-toxicity and cancer.**
- Employ strong critical thinking skills in analyzing and interpreting toxicological data.**
- Apply problem-solving skills to synthesize, evaluate and test hypotheses**
- Evaluate and critique both current and emerging areas of toxicology research, emerging technologies and issues in toxicology.**

Upon successful completion of the PhD In Toxicology, all students should also be able to:

- Formulate scientific knowledge in the field of toxicology by conceiving, synthesizing and conducting original research.**
- Evaluate public/occupational/environmental health hazards risks from exposure to chemicals, pathogens or toxic materials using advanced research methods**
- Construct research findings and scientific literature to inform public policy by making public/occupational/environmental health recommendations concerning risks of exposures to chemicals, pathogens or toxic materials.**

YOU AND YOUR ADVISOR

A VERY IMPORTANT RELATIONSHIP

ADVISOR/MENTOR NOW

REFERENCE AND COLLEAGUE LATER

WORK AS A TEAM



Doctoral Program of Study: Graduate School Policy

http://www.uga.edu/gradschool/academics/PhD_req.html

- The residence requirement for the Doctor of Philosophy degree is interpreted as 30 hours of consecutive graduate coursework that is included on the program of study.
- This program of study must carry a minimum of 30 hours of course work, three hours of which must be dissertation writing (9300).
- A doctoral program of study should consist of 16 or more hours of 8000- and 9000-level courses, *exclusive of 9000 (research) or 9300 (dissertation writing)*.
- The doctoral program of study for a student who bypasses the master's degree must contain a minimum of 16 hours of 8000- or 9000-level courses and four additional hours of University of Georgia courses open only to graduate students.
- Courses not allowed on a program of study are directed study courses, 9005 (Graduate Seminar), GRSC 7770, GRSC 9270, and ELAN 7768/7769.

Graduate Seminars

- All graduate students are expected to participate in seminar series offered by their home departments and any seminars arranged by the ITP.
- If a student's home department offers a seminar course for credit, ITP students are expected to register for those courses as stipulated by the home department.
- Students are also encouraged to participate in departmental or research group journal clubs when offered.



Graduate School Enrollment Policy

Graduate School Enrollment Policy

<http://www.uga.edu/gradschool/academics/registration.html>

- A student who holds an assistantship must register for a minimum of 12 hours of graduate credit during the fall and spring semesters and 9 hours of graduate credit during the summer semester.

Minimum Enrollment

- All enrolled students pursuing graduate degrees at the University of Georgia must maintain continuous enrollment from matriculation until completion of all degree requirements.
- Continuous enrollment is defined as registering for a minimum of three (3) credits in at least two semesters per academic year (Fall, Spring, Summer) until the degree is attained or status as a degree-seeking graduate student is terminated.

Assistantships

- Potential sources of support include home departments, colleges/schools and extramural programs.
- Some graduate assistantships are also available through the ITP.
- Continuation or award of ITP assistantships is not automatic, but is determined on the basis of demonstrated progress in research and course work, experience, and/or the promise of excellence and progress demonstrated by student.
- Annual progress reports from the student's Advisory Committee are important in documenting student progress.
- Students receiving ITP graduate assistantships are required to carry a minimum course load of **12** hours per semester, and are expected to maintain a minimum cumulative GPA of **3.0**. (Many departments require **18** hours per semester).



TRAVEL FUNDING

- ☐ **HOME DEPARTMENT FUNDING** – YOUR MAJOR ADVISOR WILL LET YOU KNOW WHAT, IF ANY, FUNDING IS AVAILABLE FOR TRAVEL.
- ☐ **TOX DEPARTMENT** – GENERALLY, TOX SUPPORTS EACH STUDENT WITH A TRAVEL AWARD EACH YEAR TO PRESENT THEIR RESEARCH.
- ☐ **GRADUATE SCHOOL** – TOX WILL SEND OUT NOTICES FOR GRADUATE SCHOOL TRAVEL DEADLINES. THE AMOUNT AWARDED VARIES.
- ☐ **OUTSIDE AGENCIES - GRANTS**



MILESTONES AND PROGRESSION CHECKLIST FOR ITP PHD STUDENTS

☐ SELECTION OF ADVISORY COMMITTEE

• SECOND YEAR –

☐ PRELIMINARY PROGRAM OF STUDY COMPLETED

☐ ITP GRADUATE COMMITTEE ASSESSMENT - FORM #1

• THIRD YEAR –

☐ FINAL PROGRAM OF STUDY

☐ WRITTEN PRELIMINARY EXAM COMPLETED

☐ NOTICE OF ORAL PRELIMS SENT & ORAL PRELIMINARY EXAM COMPLETED

☐ APPLICATION FOR CANDIDACY SUBMITTED

☐ ITP GRADUATE COMMITTEE ASSESSMENT - FORM #2

• FOURTH – FIFTH YEAR -

☐ ITP GRADUATE COMMITTEE ASSESSMENT FORM #3, #4

☐ APPLICATION FOR GRADUATION, PHD COMMENCEMENT INFO SENT

☐ ANNOUNCEMENT OF DOCTORAL DEFENSE SENT

☐ TOX EXIT INTERVIEW

Enrolled Student Portal

Effective immediately, all enrolled graduate students should use our new method for: (a) selecting their major professor/faculty supervisor; (b) requesting members for their graduate advisory committee.

Going forward, each graduate student will use their [Enrolled Student Progress Portal](#) (the AdvCmte tab) to select or propose their Major Professor (*all graduate students*) and to propose members for their Graduate Advisory Committee (graduate students in programs that require this committee). The latter proposals will go through a validation and approval process that will include you.

We have developed an [instruction manual](#) for the new procedure. This manual is also available from a How To link on the AdvCmte tab of the student's portal.

Miscellaneous

RESEARCH COMPLIANCE

- All students working in laboratories are required to meet certain federal/state regulations regarding safety and workplace conduct.
- In addition, depending on the type of research done in a particular lab there may be additional requirements for compliance.
- Any student whose research will involve the use of human subjects must make application to the Institutional Review Board in the Office of the Vice President of Research for approval (<http://www.ovpr.uga.edu/hso/index.html>).
- Any student whose research will involve the use of animals must comply with the requirements of the Institutional Animal Care and Use Committee (<http://www.ovpr.uga.edu/compliance/oacu/iacuc/>).

UGA Animal Use and Care Policy (excerpt from OACU website)

- The Office of Animal Care and Use (OACU)** oversees the University's use of animals in scientific investigation and instruction. Two training modules are required for researchers and their staff members (including students) who are conducting work with animals. They are
- “IACUC 101: Animal Care and Use Compliance Basics” and “Staying Healthy While Working with Animals”. These training modules are now both available online.

Miscellaneous

LABORATORY SAFETY (excerpts from ESD website)

- The UGA Environmental Safety Division (ESD) works closely with department heads, departmental safety representatives, and the rest of the University community to foster a safe working environment for University employees, students and visitors.
- All UGA employees working with chemicals and/or hazardous substances are required to comply with policies regarding 'right to know' and 'hazardous materials'. Please consult with your major professor regarding these policies. ESD has developed training modules for these programs which are provided below.

Right to Know

- The Right to Know Program ensures compliance with the State of Georgia Public Employees Hazardous Chemical Protection and Right to Know Act of 1988.
- This is accomplished through the implementation of the UGA Right to Know Plan. For more information refer to <http://www.esd.uga.edu/rtkcs/index.htm>.

Hazardous Materials Management

- The Hazardous Materials Program provides services and assistance to researchers handling and producing hazardous waste.
- For more information refer to <http://www.esd.uga.edu/hazmat/training.htm>.

Radiation Safety

- The Radiation Safety Program provides service and assistance to researchers using ionizing radiation in their operations.
- Many of the activities of this program are mandated by Georgia state law and controlled by policies established by the Radiation Safety Committee, members of which are appointed by the President of the University.

Please consult with your major professor regarding your responsibility in complying with these policies

Submitting Documents

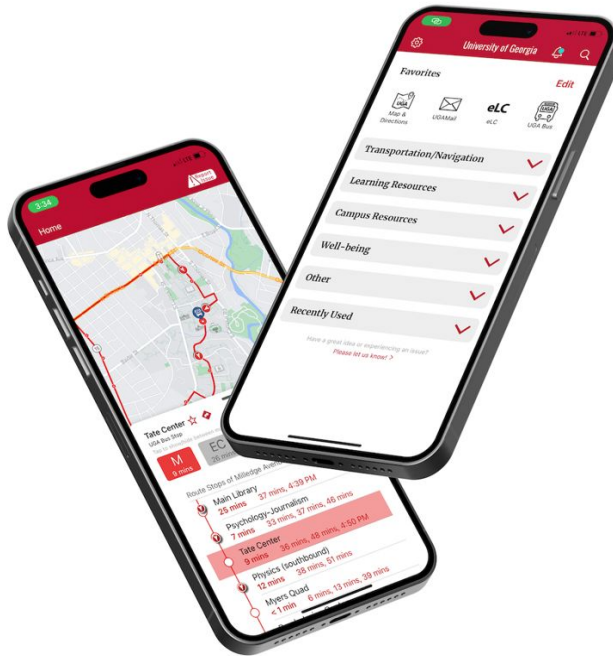
When submitting forms in GradStatus, please follow the directions from the Graduate school below. If the forms are not submitted correctly, the Toxicology Program office will not receive your documents and will be unable to move them along.

Message from the Grad School:

Toxicology students must list Toxicology in the department section of the form, regardless of their department. We have to do it this way because of how GradStatus was built. The GC and GCA for Toxicology have Toxicology as their department in GradStatus. Any student who selects Toxicology for the department will be routed to the Toxicology GC and GCA.

Campus Information

UGA Mobile App
Transportation/navigation
Learning Resources
Campus Resources
Well-being



RECOGNITION & AWARDS

From Department

- **Any recognition at the department level**

From ITP

- **Spring Retreat: Best Presentations – Platform and Poster**
- **Graduate School**
- **Numerous competitions throughout the year.**
- **Emerging Leaders**
- **Excellence in Research**

From Outside Agencies

- **SESOT, SOT, SETAC, Teratology Society, etc ...**

Finally!

Work Hard

Have fun

Do not hesitate to contact us for any questions. We are here to help you succeed.